

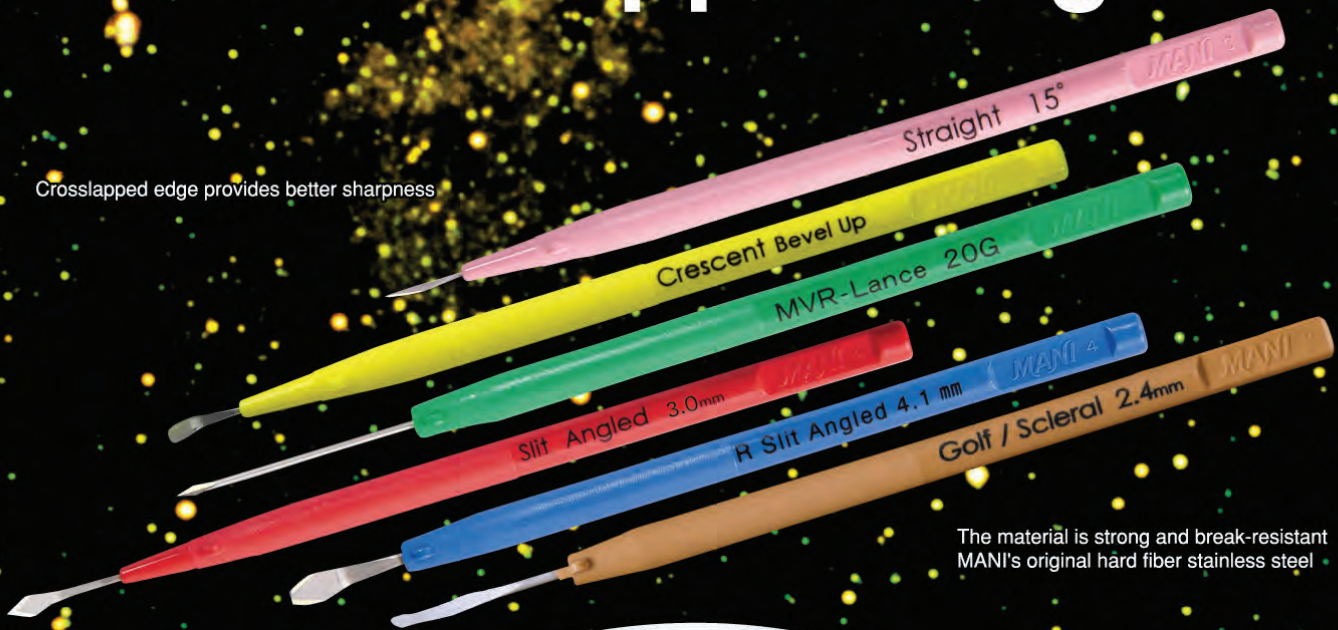


MANI®

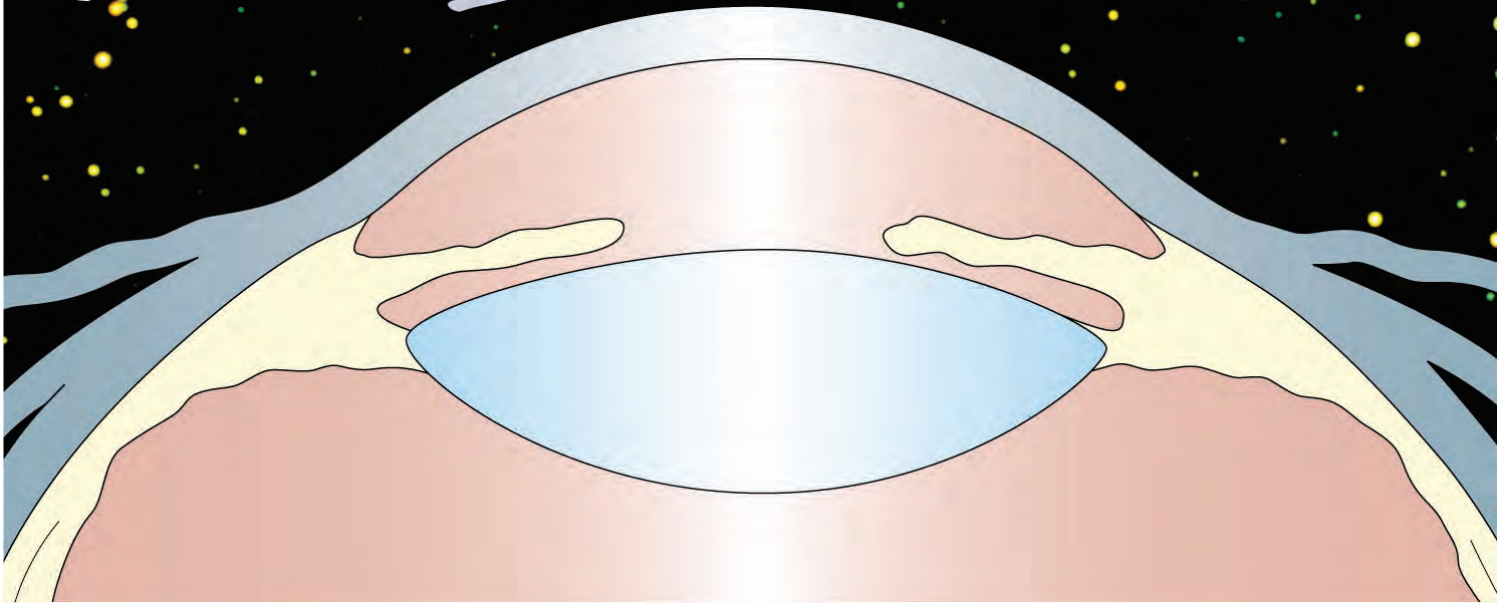
Ophthalmic Knife

Crosslapped Edge

Crosslapped edge provides better sharpness



The material is strong and break-resistant
MANI's original hard fiber stainless steel





MANI® Ophthalmic Knife

Straight Knife

6pcs/box



MST

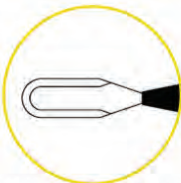


actual size

| Product Name | ORDER# |
|----------------|--------|
| Straight 15.0° | MST 15 |
| Straight 22.5° | MST 22 |
| Straight 30.0° | MST 30 |
| Straight 45.0° | MST 45 |

Crescent Knife

Angle = 60.0° 6pcs/box



MCU·MCD·MCS

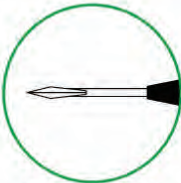


actual size

| Product Name (Blade Width) | ORDER# |
|------------------------------|--------|
| Crescent Bevel Up (2.3mm) | MCU 26 |
| Crescent Bevel Up (2.0mm) | MCU 20 |
| Crescent Bevel Down (2.3mm) | MCD 26 |
| Crescent Straight (2.3mm) | MCS 26 |

MVR Knife

Angle = 45.0° 6pcs/box



MVR·MPK



actual size

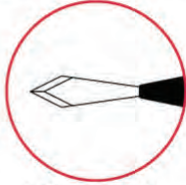
| Product Name (Blade Width) | ORDER# |
|---------------------------------------|---------|
| MVR-Lance 19G (1.5mm) | MVR 19 |
| MVR-Lance 20G (1.2mm) | MVR 20 |
| MVR-Lance 23G (0.9mm) | MVR 23 |
| MVR-Lance 24G (0.8mm) | MVR 24 |
| MVR-Lance 25G* ¹ (0.55mm) | MVR 25 |
| MVR-Angled 19G (1.5mm) | MVR 19A |
| MVR-Angled 20G (1.2mm) | MVR 20A |
| MVR-Angled 21G (1.1mm) | MVR 21A |
| MVR-Angled 23G (0.9mm) | MVR 23A |
| MVR-Angled 24G (0.8mm) | MVR 24A |
| MVR-Angled 23G (0.7mm) | MVR23AD |
| Port Knife 25G* ² (0.45mm) | MPK 25 |

*1.MVR25 is the knife to make infusion port for 25G cannula that enters into sclera, or can be inserted into 23G cannula.
 *2.MPK25,Port Knife 25G can be inserted into 25G cannula.

The crosslapped edge made of MANI's original hard fiber stainless steel produces the ultimate in sharpness.

Slit Knife

Angle = 45.0° 6pcs/box



MSL • MSS



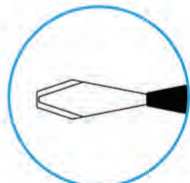
actual size

| Product Name | ORDER# |
|---------------------|--------|
| Slit Angled 1.0mm | MSL 10 |
| Slit Angled 1.1mm | MSL 11 |
| Slit Angled 1.2mm | MSL 12 |
| Slit Angled 1.3mm | MSL 13 |
| Slit Angled 1.4mm | MSL 14 |
| Slit Angled 1.6mm | MSL 16 |
| Slit Angled 1.8mm | MSL 18 |
| Slit Angled 2.0mm | MSL 20 |
| Slit Angled 2.2mm | MSL 22 |
| Slit Angled 2.3mm | MSL 23 |
| Slit Angled 2.4mm | MSL 24 |
| Slit Angled 2.5mm | MSL 25 |
| Slit Angled 2.65mm | MSL 26 |
| Slit Angled 2.75mm | MSL 27 |
| Slit Angled 2.8mm | MSL 28 |
| Slit Angled 2.9mm | MSL 29 |
| Slit Angled 3.0mm | MSL 30 |
| Slit Angled 3.2mm | MSL 32 |
| Slit Angled 3.5mm | MSL 35 |
| Slit Straight 1.0mm | MSS 10 |
| Slit Straight 2.8mm | MSS 28 |
| Slit Straight 3.0mm | MSS 30 |

MANI® Ophthalmic Knife



R Slit Knife (Implant) Angle = 45.0° 6pcs/box



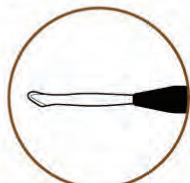
MRS



actual size

| Product Name | ORDER# |
|----------------------|--------|
| R Slit Angled 2.6mm | MRS 26 |
| R Slit Angled 3.2mm | MRS 32 |
| R Slit Angled 3.5mm | MRS 35 |
| R Slit Angled 3.75mm | MRS 37 |
| R Slit Angled 4.1 mm | MRS 41 |
| R Slit Angled 5.2mm | MRS 52 |
| R Slit Angled 5.5mm | MRS 55 |

Golf/Scleral Knife 6pcs/box



MGL



actual size

| Product Name | ORDER# |
|--------------------|--------|
| Golf/Scleral 2.4mm | MGL 24 |

The crosslapped edge made of MANI's original hard fiber stainless steel produces the ultimate in sharpness.

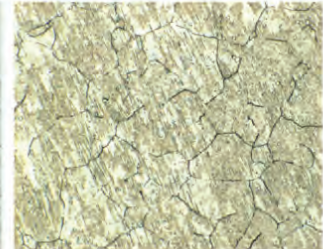
The details of "Ultimate in Sharpness"



MANI's original hard fiber stainless steel (Austenite Stainless Steel) is a source of strength and which has ensured thin but strong edge. (Edge thickness of crescent knife MANI: 0.14mm Company A : 0.18mm)



Structure of MANI hard fiber stainless steel



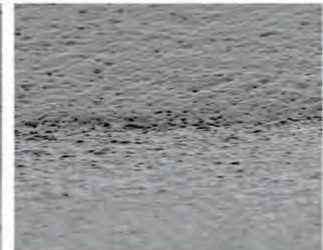
Structure of other's stainless steel



MANI fine-processing technique has created the crosslapped edge, which provides excellent sharpness and consistent quality. (Crosslapped edge : polishing direction is vertical of the edge)



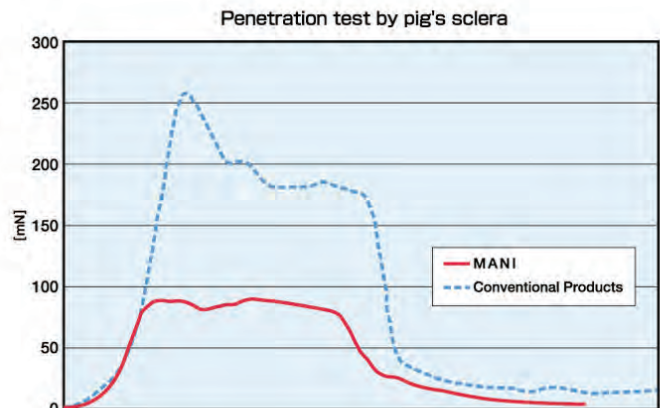
MANI crosslapped edge



Other's edge



MANI has intensively focused on cutting quality in developing our ophthalmic knives. The edge created by the original processing techniques provides "Ultimate in Sharpness" and minimizes tissue damage.





—Wide Variety of Colors and Models—



—Micro Sharpening Technology—
(Enlarged photo of MANI Ophthalmic Knife)

Do you know this is another MANI?
MANI surgical needles occupy 70% and above of total production volume in Japan and 90% and above of export sales from Japan.
In addition, MANI files and reamers occupy 35% and above in the global market.

MANI wishes human good health and contributes to the medical treatment in the world. Instruments of MANI obtain deep trust at medical treatment sites more than 120 countries in the world for over 50 years.

THE BEST QUALITY
IN THE WORLD,
TO THE WORLD.

MANI Instruments are distributed to medical field through following channels.

- Excellent Medical wholesalers in Domestic & Foreign market.
- Excellent Export Trading Companies.

<http://www.mani.co.jp> E-mail:ophthalmic@ms.mani.co.jp



▲MANI TAKANEZAWA Facility



▲MANI KIYOHARA Facility



9100 Watson Road
Suite 100
St. Louis, MO 63126

ZMCO01

Telephone: (314) 849-7773
(800) 756-7773
Fax: (314) 849-7776



8-3 KIYOHARA INDUSTRIAL PARK, UTSUNOMIYA,
TOCHIGI, 321-3231, JAPAN
Phone:+81286677565 Fax:+81286676177

0 00610 (090303)